



News Release

29 July 2008

Core Energy Group and CSIRO to launch world class energy simulator - GENERSYS

Core Energy Group today announced its plan to commence commercialisation of GENERSYS, an advanced energy industry simulation system which has been developed in conjunction with CSIRO.

Commenting on the launch of the system, Chief Executive of Core, Paul Taliangis said that "GENERSYS is positioned to become the leading energy simulation and scenario analysis tool of its type in Australia and potentially throughout the world".

GENERSYS provides users with a systematic and practical approach to developing short, mid and longer term (50 year) projections of key elements of Australia's energy industry and its implications for key stakeholders.

"Core has been using GENERSYS to analyse a wide range of interrelated factors across the energy chain for some time, with extremely impressive results said Taliangis. The system enables highly complex scenarios to be run quickly and painlessly, leveraging world class technology and extensive, high quality data developed by industry experts."

The system has application across the following critical areas of the energy system:

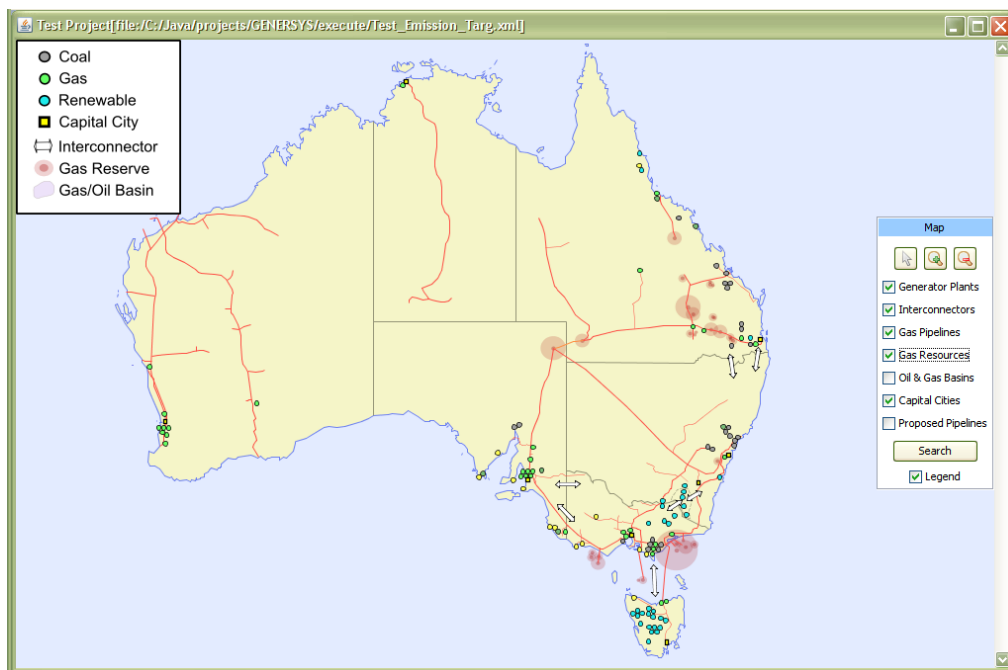
- Carbon - emission by electricity, gas and coal sectors
- Electricity - demand, supply, cost, pricing , interconnectors (half hour interval)
 - > Coal, gas, hydro, wind
- Gas – demand, supply, cost, pricing (daily interval)
- Coal - electricity fuel usage
- Transmission - gas and electricity

Core and CSIRO have plans to continually develop GENERSYS to address all critical elements of the energy system in a fully integrated manner.

GENERSYS Profile

GENERSYS is an energy simulation system which enables a wide range of users to undertake highly advanced energy industry scenario analysis in a scientifically and commercially rigorous, yet user friendly and time efficient manner.

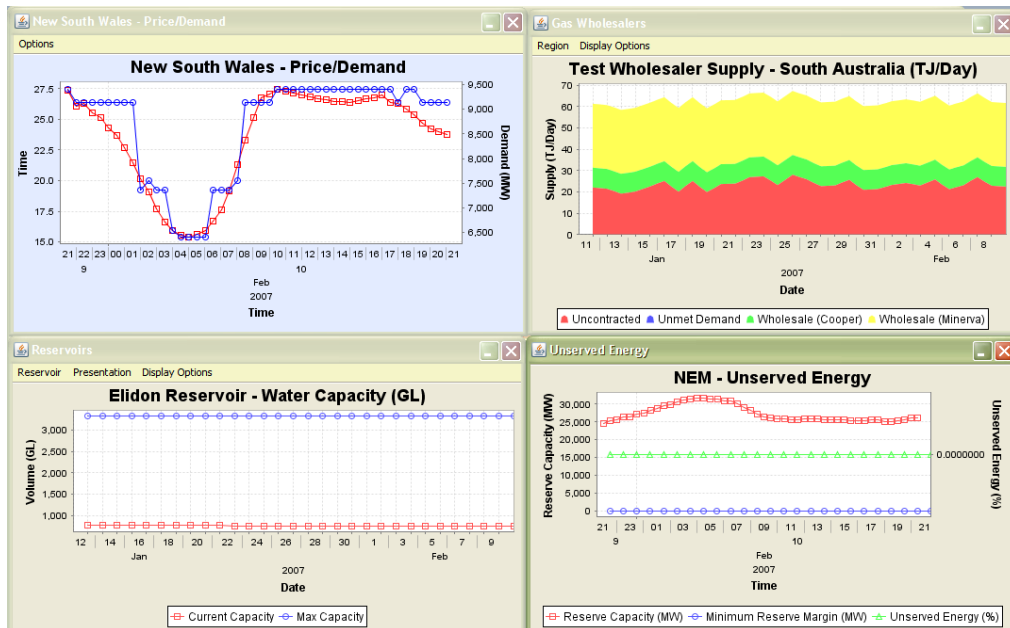
One of the main features of GENERSYS is its interactive map interface which provides access to spatial information about the interrelated elements of the Australian energy market.



For each scenario, GENERSYS provides an extensive range of outputs which can be used in generic form or tailored to meet user specific needs through interface with Microsoft Excel.

Examples of the types of graphical outputs follow. The illustration shows four charts:

- Current electricity demand and spot price in the New South Wales region;
- Contracts supplying gas demand in South Australia for a gas wholesaler;
- Water level for a reservoir attached to the Elidon generator plant; and
- Current level of Unserved Energy (USE) for the NEM.



The following list provides a guide to the areas addressed by GENERSYS:

- Climatic factors which give rise to energy system volatility
- Carbon emissions by generator, energy source
- Investment analysis
- Electricity
 - > Coal, gas and hydro electricity dispatch - half hour intervals
 - > Electricity price, cost and profitability
 - > Wind generation
 - > Interconnectors
- Coal
 - > Fuel usage by coal fired electricity generators
- Gas
 - > Supply by major supply source/ field
 - > Contracts
 - > Retailer/ wholesaler portfolios
 - > Demand by delivery node/ customer - daily intervals
 - > Gas price, cost and profitability
- Pipelines
 - > Capacity – existing and fully compressed
 - > Utilisation (throughput and reservation)
 - > Tariffs

For more information please contact

Core Energy Group info@coreenergy.com.au or

Mr Tennyson Wickham **T+ 61 8 8418 8596
tw@coreenergy.com.au**

